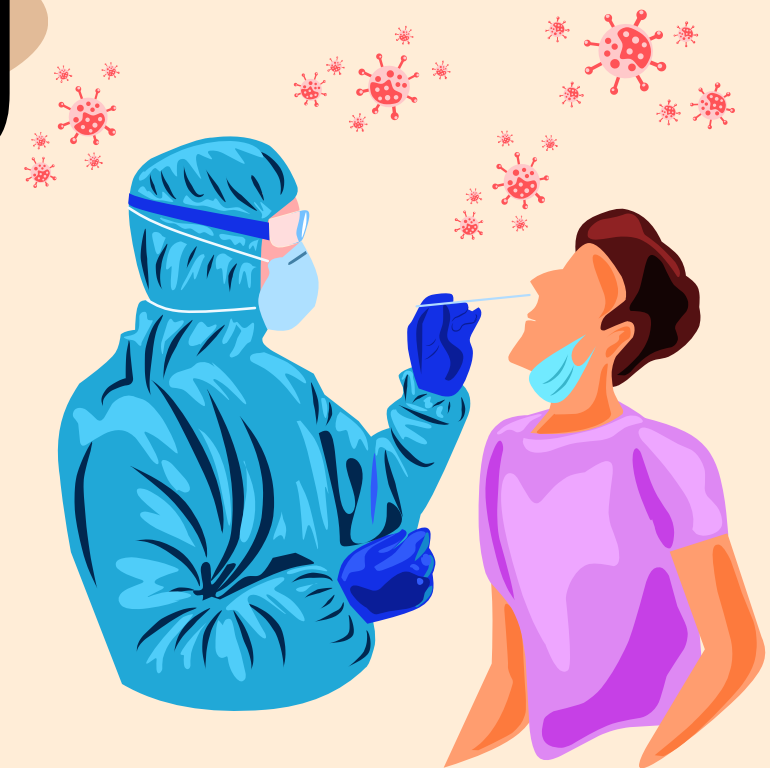


COVID Activity Report Presentation



By



conserve
earth
Foundation
Protect | Promote | Progress

CONSERVE EARTH FOUNDATION | COVID-19 Relief Overview

Strategic Alliance: Partnered closely with the district administration to streamline regional pandemic emergency operations.

Geographic Coverage: Mobilized extensive volunteer networks across the entire, geographically challenging Gudalur Block.

Massive Human Impact: Met more than 50,000+ people directly at their doorsteps to deliver critical aid.

Tribal Inclusivity: Focused specialized rescue and supply efforts on the isolated hill tribes of the region.

Doorstep Delivery Model: Adopted a strict home-delivery system to eliminate infection risks from crowded distribution camps.

Terrain Navigation: Volunteers successfully traversed rugged, hilly landscapes to ensure no remote settlement was left behind.

Food Security: Supplied free, comprehensive grocery kits containing essential grains, pulses, and cooking staples.

Nutritional Support: Distributed fresh vegetables directly to families to maintain nutrition during strict market lockdowns.

Health Interventions: Handed out immunity boosters and preventative health supplements to vulnerable community members.

Sanitation Mobilization: Launched immediate cleaning and deep sanitization drives across local residential areas and public squares.

Contagion Mitigation: Disinfected common gathering spaces to actively curb the community spread of the virus.

Livelihood Protection: Identified and assisted informal economy workers facing sudden, total loss of daily wages.

Driver Assistance: Provided dedicated financial and material packages to local drivers stranded by transport shutdowns.

Agile Logistics: Established a rapid-response supply chain capable of handling bulk materials under strict lockdown regulations.

Safety Protocols: Insisted on strict masking, hygiene, and social distancing guidelines for all active field volunteers.

Dignity in Relief: Ensured aid was delivered respectfully, protecting the privacy and safety of every recipient.

Administrative Trust: Served as a reliable, compliant ground-execution partner for local government welfare efforts.

Resource Mobilization: Channeled community contributions directly into tangible, life-saving field supplies.

Crisis Leadership: Demonstrated institutional agility by pivoting standard foundation operations into a full-scale relief force.

Enduring Legacy: Established a proven blueprint for last-mile humanitarian intervention in marginalized rural zones.

CONSERVE EARTH FOUNDATION | COVID-19 Relief Overview

Strategic Alliance: Partnered closely with the district administration to streamline regional pandemic emergency operations.

Geographic Coverage: Mobilized extensive volunteer networks across the entire, geographically challenging Gudalur Block.

Massive Human Impact: Met more than 50,000+ people directly at their doorsteps to deliver critical aid.

Tribal Inclusivity: Focused specialized rescue and supply efforts on the isolated hill tribes of the region.

Doorstep Delivery Model: Adopted a strict home-delivery system to eliminate infection risks from crowded distribution camps.

Terrain Navigation: Volunteers successfully traversed rugged, hilly landscapes to ensure no remote settlement was left behind.

Food Security: Supplied free, comprehensive grocery kits containing essential grains, pulses, and cooking staples.

Nutritional Support: Distributed fresh vegetables directly to families to maintain nutrition during strict market lockdowns.

Health Interventions: Handed out immunity boosters and preventative health supplements to vulnerable community members.

Sanitation Mobilization: Launched immediate cleaning and deep sanitization drives across local residential areas and public squares.

Contagion Mitigation: Disinfected common gathering spaces to actively curb the community spread of the virus.

Livelihood Protection: Identified and assisted informal economy workers facing sudden, total loss of daily wages.

Driver Assistance: Provided dedicated financial and material packages to local drivers stranded by transport shutdowns.

Agile Logistics: Established a rapid-response supply chain capable of handling bulk materials under strict lockdown regulations.

Safety Protocols: Insisted on strict masking, hygiene, and social distancing guidelines for all active field volunteers.

Dignity in Relief: Ensured aid was delivered respectfully, protecting the privacy and safety of every recipient.

Administrative Trust: Served as a reliable, compliant ground-execution partner for local government welfare efforts.

Resource Mobilization: Channeled community contributions directly into tangible, life-saving field supplies.

Crisis Leadership: Demonstrated institutional agility by pivoting standard foundation operations into a full-scale relief force.

Enduring Legacy: Established a proven blueprint for last-mile humanitarian intervention in marginalized rural zones.

Objectives & Goals

Objectives

Marginalized Empowerment: Support the health, dignity, and livelihoods of hill tribes and rural communities in remote regions.

Crisis Response: Partner with district administrations to deploy rapid, systematic relief during public health or environmental emergencies.

Community Health: Enhance public wellness through targeted nutritional security, immunity support, and localized sanitization drives.

Goals

Last-Mile Delivery: Maintain a doorstep-delivery logistics network capable of safely reaching 50,000+ vulnerable individuals in tough terrains.

Livelihood Safety Nets: Provide immediate financial and material aid to informal workers, like local drivers, during economic shutdowns.

Public Collaboration: Serve as the primary, trusted ground-execution partner for local government welfare initiatives.

Timeline Firstwave

Emergency Mobilization & Doorstep Network Launch

March – April 2020

Following the announcement of the nationwide lockdown, the foundation immediately mapped isolated tribal hamlets and remote rural pockets across the Gudalur Block. In partnership with the District Administration, a strict "Zero-Crowd" doorstep model was designed to bypass central distribution hazards.

First Wave Relief: Basic Food & Vegetable Security

May – August 2020

Volunteers navigated rugged hilly terrains to safely distribute comprehensive free grocery kits containing essential cooking grains and pulses. Simultaneously, fresh vegetables were sourced and delivered directly to households to combat severe food supply chain disruptions.

Sanitation Drives & Public Hygiene Interventions

September – December 2020

As regional restrictions experienced minor relaxations, the foundation shifted intense focus toward localized disinfection. Teams organized extensive cleaning and deep sanitization works in common residential areas, streets, and rural market squares to break the chain of community transmission.

Livelihood Safety Nets for Local Drivers

January – March 2021

Recognizing that prolonged transport shutdowns left the informal economy devastated, the foundation launched dedicated driver assistance programs. Targeted financial and material packages were delivered to local commercial and private drivers stranded without alternative income options.

Timeline Second Wave

Second Wave Response: Tribal Health & Immunity Boosting

April – July 2021

The devastating second wave brought severe health challenges to the vulnerable hill tribes of Gudalur. The foundation rapidly deployed preventative health kits, distributing targeted immunity boosters and wellness supplements directly to indigenous families lacking easy access to healthcare centers.

Milestone Achievement & Legacy Transition

August 2021 Onward

The foundation successfully crossed its operational milestone of reaching 50,000+ individuals directly at their doorsteps. The crisis infrastructure established during the pandemic laid the strategic blueprint for the foundation's long-term, permanent rural health and welfare initiatives.

Beneficiaries

Target Beneficiary Profile: Direct-to-Doorstep Relief

During the crisis, CONSERVE EARTH FOUNDATION constructed an immediate social safety net tailored to the distinct socio-economic demographics of the Gudalur Block. While relief efforts comprehensively shielded multiple daily-wage groups, local smallholder farmers were positioned at the center of the intervention.

Spotlight: Smallholder & Tribal Farmers

The hilly terrain of the Gudalur lower plateau relies heavily on plantation agriculture (small tea growers, coffee, and spices) alongside localized paddy and ginger farming. The lockdowns completely fractured local supply chains, preventing farmers from transporting green leaf crops to factories or selling fresh produce at local markets, leading to sudden economic devastation.

Agricultural Material Exchange: The foundation actively bridged the gap by absorbing local agricultural bottlenecks—purchasing fresh vegetables directly from small, stranded farms to use in food distribution kits, sustaining their immediate household income.

Essential Household Rations: Delivered free grocery kits and dry food reserves directly to the homesteads of smallholders and indigenous tribal farmers (including Irula and Kattunayakan communities) whose remote locations left them isolated from conventional market centers.

Health Infrastructure Protection: Deployed specialized health and immunity-boosting kits directly to farming hamlets, ensuring the agricultural workforce remained protected against community transmission during critical field cycles.

Estate & Daily-Wage Labours

Activities & Highlights

Here are the core Activities Highlights of the CONSERVE EARTH FOUNDATION during its COVID-19 emergency response in the Gudalur Block:

Doorstep Mobilization: Bypassed the infection risks of crowded distribution camps by designing a direct, "zero-crowd" home-delivery network that reached 50,000+ individuals in rugged, hilly terrains.

Administrative Synergy: Jointly synchronized all field deployment routes, logistics, and safety protocols with the regional District Administration.

Targeted Tribal Outreach: Penetrated isolated, last-mile geographic pockets to extend medical and food security to the vulnerable hill tribes of Gudalur.

Agricultural Supply Rescue: Directly purchased fresh vegetables from stranded local farmers to absorb their market losses, using the produce to supply nutritional food kits to the community.

Essential Food Security: Distributed comprehensive free grocery kits containing vital dry rations, cooking grains, and pulses to daily-wage families facing sudden income loss.

Frontline Health Interventions: Handed out preventative wellness materials and targeted immunity boosters to help indigenous populations build natural defenses against the virus.

Public Sanitation Mobilization: Deployed volunteer teams to conduct extensive cleaning and deep sanitization works across dense labor colonies, common residential streets, and rural squares.

Livelihood Safety Nets: Identified and assisted informal transport workers by providing dedicated financial and material aid packages to local drivers grounded by strict transit lockdowns.

Event Outcomes

Measurable Impact Outcomes

Last-Mile Outreach Success: Successfully secured the health, safety, and nutritional needs of more than 50,000+ individuals by delivering critical aid directly to their doorsteps.

Zero-Contagion Distribution: Proved the viability of the "Zero-Crowd" doorstep delivery model, ensuring massive amounts of food and medical aid were distributed across tough terrains without causing a single localized spike or crowding event.

Mitigation of Community Spread: Actively broke potential chains of transmission in dense residential areas and labor colonies through continuous cleaning and deep sanitization works.

Indigenous Health Safeguards: Enhanced the viral defense and physical resilience of remote hill tribes by successfully delivering preventative health supplements and targeted immunity boosters to historically underserved hamlets.

Socio-Economic & Livelihood Outcomes

Agricultural Economic Cushioning: Prevented total financial collapse for local smallholder and tribal farmers by absorbing their stranded produce, immediately converting market bottlenecks into a vital community food supply.

Immediate Hunger Alleviation: Eradicated sudden nutritional deficits among estate labours and daily wagers by maintaining an uninterrupted supply of comprehensive free grocery kits and fresh vegetables during strict lockouts.

Driver Livelihood Preservation: Saved vulnerable transport families from severe economic displacement by delivering targeted material and financial safety nets to local commercial drivers whose incomes were completely halted.

Institutional & Strategic Outcomes

Government Integration: Established the foundation as a highly trusted, compliant, and deeply efficient ground-execution partner for the regional District Administration.

Civic Infrastructure Blueprint: Created an active, agile regional network of trained volunteers and community logs that can be immediately mobilized for future environmental, economic, or public health crises.

Sustained Community Trust: Solidified deep institutional bonds with marginalized populations, hill tribes, and informal worker unions across the Gudalur block, building a strong community foundation for the organization's ongoing social initiatives.

Event Outcomes

Measurable Impact Outcomes

Last-Mile Outreach Success: Successfully secured the health, safety, and nutritional needs of more than 50,000+ individuals by delivering critical aid directly to their doorsteps.

Zero-Contagion Distribution: Proved the viability of the "Zero-Crowd" doorstep delivery model, ensuring massive amounts of food and medical aid were distributed across tough terrains without causing a single localized spike or crowding event.

Mitigation of Community Spread: Actively broke potential chains of transmission in dense residential areas and labor colonies through continuous cleaning and deep sanitization works.

Indigenous Health Safeguards: Enhanced the viral defense and physical resilience of remote hill tribes by successfully delivering preventative health supplements and targeted immunity boosters to historically underserved hamlets.

Socio-Economic & Livelihood Outcomes

Agricultural Economic Cushioning: Prevented total financial collapse for local smallholder and tribal farmers by absorbing their stranded produce, immediately converting market bottlenecks into a vital community food supply.

Immediate Hunger Alleviation: Eradicated sudden nutritional deficits among estate labours and daily wagers by maintaining an uninterrupted supply of comprehensive free grocery kits and fresh vegetables during strict lockouts.

Driver Livelihood Preservation: Saved vulnerable transport families from severe economic displacement by delivering targeted material and financial safety nets to local commercial drivers whose incomes were completely halted.

Institutional & Strategic Outcomes

Government Integration: Established the foundation as a highly trusted, compliant, and deeply efficient ground-execution partner for the regional District Administration.

Civic Infrastructure Blueprint: Created an active, agile regional network of trained volunteers and community logs that can be immediately mobilized for future environmental, economic, or public health crises.

Sustained Community Trust: Solidified deep institutional bonds with marginalized populations, hill tribes, and informal worker unions across the Gudalur block, building a strong community foundation for the organization's ongoing social initiatives.

Challenges & Solutions

1. Geographic Isolation and Rugged Terrain

Challenge: The Gudalur Block features steep, hilly terrains with highly scattered, remote settlements and isolated tribal hamlets. Strict pandemic lockouts and a lack of standard transport made reaching these areas with heavy food and medical supplies logistically exhausting.

Solution: The foundation mobilized local volunteer networks who walked or utilized specialized transit routes to navigate the difficult landscape. By mapping out remote pockets in advance, they established an agile, last-mile supply chain that delivered aid directly to 50,000+ people right at their doorsteps.

2. Supply Chain Disruptions for Perishable Goods

Challenge: Market lockdowns completely fractured supply chains. Smallholder and tribal farmers could not transport their fresh vegetables to markets or factories, facing total crop wastage and sudden economic loss, while families in the block faced severe fresh food shortages.

Solution: The foundation created an agricultural supply rescue mechanism. They stepped in to purchase fresh vegetables directly from the stranded local farms—injecting immediate cash into the farming economy—and seamlessly integrated this fresh produce into the free nutritional grocery kits distributed to the public.

3. High Contagion Risk in Dense Settlements

Challenge: Setting up conventional, centralized relief camps or aid distribution tents would have caused massive crowding, directly violating social distancing protocols and risking a major spike in community virus transmission, especially in dense labor colonies.

Solution: The foundation strictly adopted a "Zero-Crowd, Doorstep Delivery Model." Instead of making people travel to the aid, volunteers brought the aid to them. Concurrently, teams launched intensive cleaning and deep sanitization works directly inside residential streets and common squares to actively break the chain of transmission.

4. Severe Economic Displacement of Daily-Wage Workers

Challenge: The sudden, prolonged halting of public transit and estate work completely wiped out the daily cash earnings of informal workers—specifically tea/coffee estate labours and local commercial drivers—leaving them instantly unable to buy basic household necessities.

Solution: Targeted social safety nets were rapidly deployed. The foundation curated comprehensive free grocery kits (containing grains, pulses, and cooking staples) to sustain estate labours, and extended dedicated material and financial assistance packages to local commercial drivers to protect their families from severe livelihood displacement.

5. Healthcare and Resource Gaps for Indigenous Tribes

Challenge: Vulnerable hill tribes faced severe barriers to accessing mainstream healthcare, protective equipment, and reliable safety information, making them highly susceptible to the devastating second wave of the virus.

Solution: Working in close coordination with the District Administration, the foundation deployed specialized frontline health interventions. Volunteers trekked into indigenous hamlets to distribute targeted preventative wellness materials, safety guidance, and immunity-boosting supplements directly to tribal families.

Challenges & Solutions

1. Geographic Isolation and Rugged Terrain

Challenge: The Gudalur Block features steep, hilly terrains with highly scattered, remote settlements and isolated tribal hamlets. Strict pandemic lockouts and a lack of standard transport made reaching these areas with heavy food and medical supplies logistically exhausting.

Solution: The foundation mobilized local volunteer networks who walked or utilized specialized transit routes to navigate the difficult landscape. By mapping out remote pockets in advance, they established an agile, last-mile supply chain that delivered aid directly to 50,000+ people right at their doorsteps.

2. Supply Chain Disruptions for Perishable Goods

Challenge: Market lockdowns completely fractured supply chains. Smallholder and tribal farmers could not transport their fresh vegetables to markets or factories, facing total crop wastage and sudden economic loss, while families in the block faced severe fresh food shortages.

Solution: The foundation created an agricultural supply rescue mechanism. They stepped in to purchase fresh vegetables directly from the stranded local farms—injecting immediate cash into the farming economy—and seamlessly integrated this fresh produce into the free nutritional grocery kits distributed to the public.

3. High Contagion Risk in Dense Settlements

Challenge: Setting up conventional, centralized relief camps or aid distribution tents would have caused massive crowding, directly violating social distancing protocols and risking a major spike in community virus transmission, especially in dense labor colonies.

Solution: The foundation strictly adopted a "Zero-Crowd, Doorstep Delivery Model." Instead of making people travel to the aid, volunteers brought the aid to them. Concurrently, teams launched intensive cleaning and deep sanitization works directly inside residential streets and common squares to actively break the chain of transmission.

4. Severe Economic Displacement of Daily-Wage Workers

Challenge: The sudden, prolonged halting of public transit and estate work completely wiped out the daily cash earnings of informal workers—specifically tea/coffee estate labours and local commercial drivers—leaving them instantly unable to buy basic household necessities.

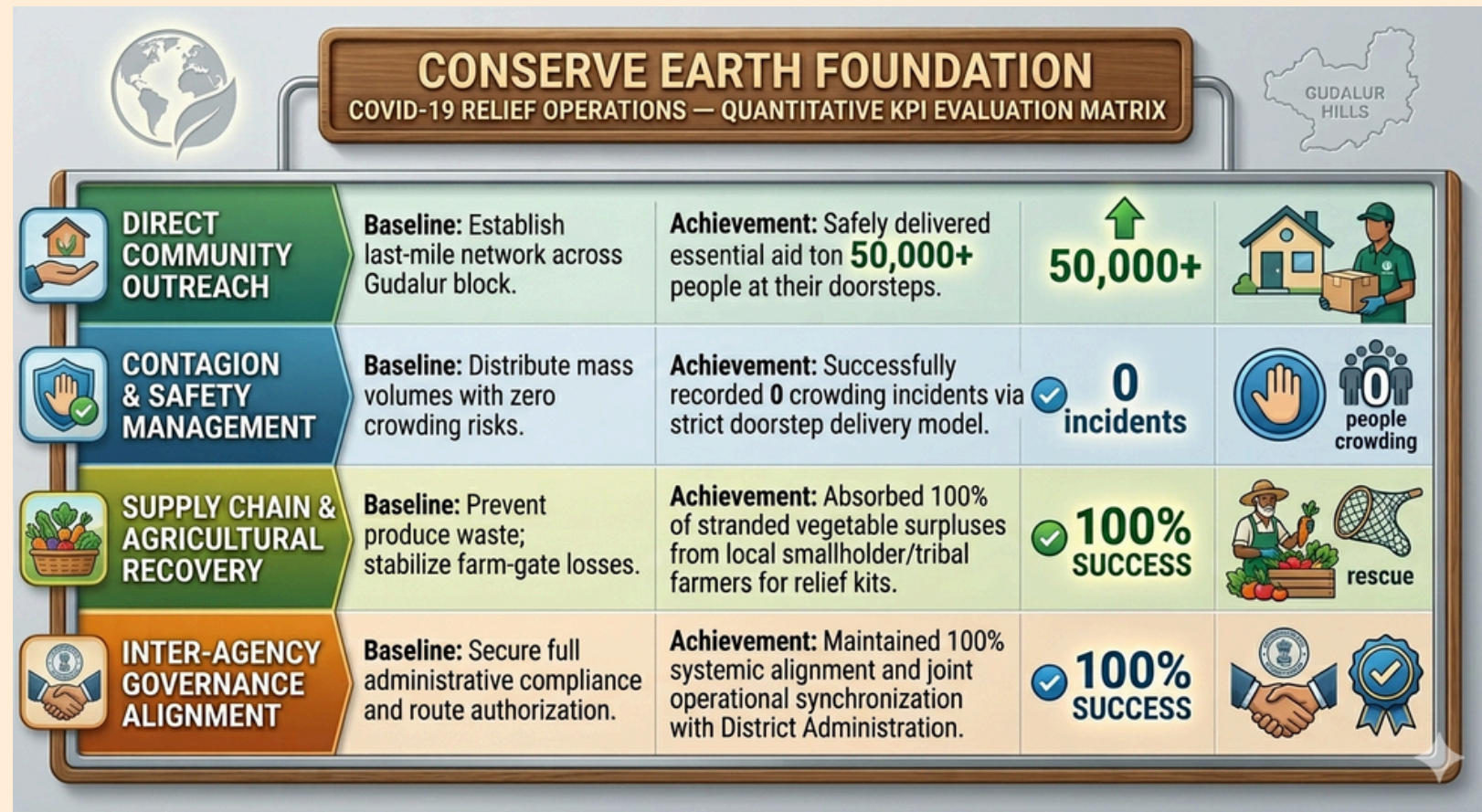
Solution: Targeted social safety nets were rapidly deployed. The foundation curated comprehensive free grocery kits (containing grains, pulses, and cooking staples) to sustain estate labours, and extended dedicated material and financial assistance packages to local commercial drivers to protect their families from severe livelihood displacement.

5. Healthcare and Resource Gaps for Indigenous Tribes

Challenge: Vulnerable hill tribes faced severe barriers to accessing mainstream healthcare, protective equipment, and reliable safety information, making them highly susceptible to the devastating second wave of the virus.

Solution: Working in close coordination with the District Administration, the foundation deployed specialized frontline health interventions. Volunteers trekked into indigenous hamlets to distribute targeted preventative wellness materials, safety guidance, and immunity-boosting supplements directly to tribal families.

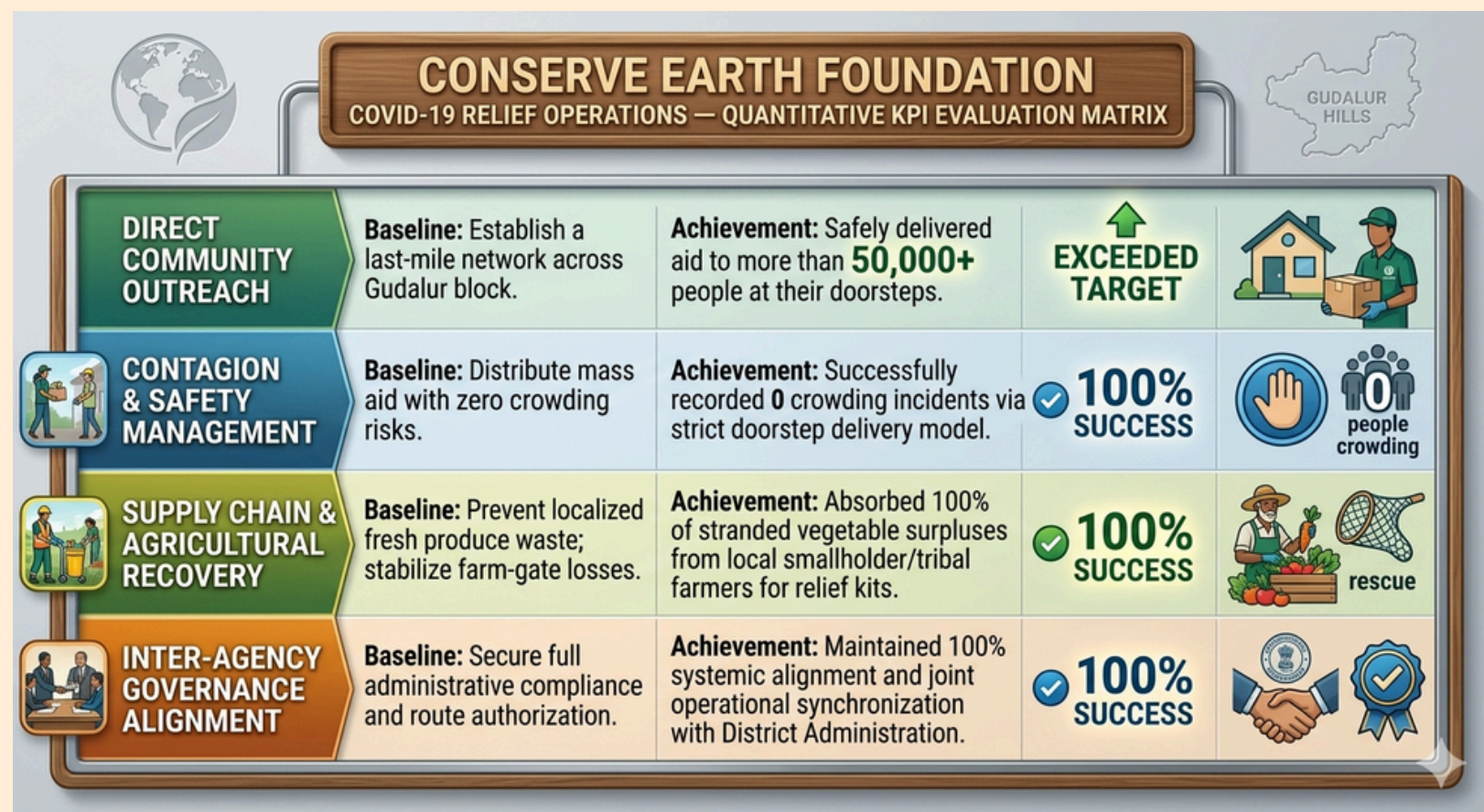
Quantitative Evaluation (Key Performance Indicators)



Institutional SWOT Evaluation & Looking Forward
Core Strength Demonstrated: Superior last-mile logistical capability in rugged terrain and deep structural agility in shifting standard NGO programs into an emergency response force.

Area of Growth Identified: The crisis highlighted a profound, systemic lack of permanent healthcare access in tribal hamlets, sparking the foundation's strategic evolution toward establishing localized, long-term clinical infrastructure.

The Next Chapter: The immense community trust, demographic data, and operational network built during this pandemic response have laid the strategic blueprint for the foundation's current development of a 50-bed healthcare facility under the Conserve Earth Foundation. This project will permanently institutionalize the medical and wellness support models pioneered during the pandemic.



Gallery

Thank
You